

Te Kura Rauwhiti O Waihi

WAIHI EAST SCHOOL *Rise Above And Shine*



Waihi East Primary School Newsletter
Term 4 2018 Week 9
12 December 2018



2018 Santa Parade

UPCOMING DATES

Dec 13	Kapahaka End of Year Trip.
Dec 14	East School Triathlon.
Dec 18	Prize giving. 11am.
Dec 19	Year 6 Trip Waimarino.
Dec 20	Last Day of Term 4. 1pm finish.
Feb 4	First day 2019.
Feb 6	Waitangi Day. School Closed.

WEEKLY NOTICES AND REMINDERS

CHRISTMAS CARNIVAL TWILIGHT MARKET

A huge Thank You to all our whanau who helped with the Market last week. Thanks to those who supported the classes with their items, manned a stall, donated baking and raffle items. We still have some raffles left to see and these will be for sale after school under the big tree until next Tuesday when we will be drawing them at Prize giving.

We would like to add a special mention to Michelle Burr, our fabulous organiser of the gala. It wouldn't have happened without you Michelle. THANK YOU!

SCHOOL LIBRARY

Our school library has closed for the year. Please return all library books now . There is amnesty box in the office to drop in any school books, i.e. library home readers, journals. Thanks for your assistance with this!.

TOUCH DRAW TONIGHT Year 3/4 draw

3.30pm Field 1 **SEMI** Thunder v Beach Sting.
Field 2 **SEMI** Lightning v St Joes.
Field 4 Storm v Beach Bulldogs.
3.50pm Field1 **FINAL** Winner G1 v Winner G2.
Field 2 **3rd v 4th** Loser G1 v Loser G2.
BYE Storm.

4.15pm YEAR 3/4 PRIZEGIVING

TOUCH DRAW TONIGHT Year 5/6 draw

4.15pm Field 1 **SEMI** Dragons v Beach Hawks.
Field 3 Warriors v Waimata Rau.
BYE Eels.
4.40pm Field1 **FINAL** Winner G1 v Winner G2.
Field 2 **3rd v 4th** Loser G1 v Loser G2.
Field 3 Eels v Beach Sharks
Field 4 Warriors v Waimata Raumati

5.10pm YEAR 5/6 PRIZEGIVING

KAPAHAKA END OF YEAR TRIP— DEC 13

Forms went home earlier last this week for the Kapahaka trip. Please return the permission part to school with the \$5 koha asap.

EAST SCHOOL TRIATHLON

Our annual school triathlon is being held at school in Week 9 Friday 14th December. We will be needing some lovely parent helpers to help with running the event. Please see Kim if you can help.



YEAR 6 END OF YEAR TRIP—WAIMARINO- DEC 19

Information letters have gone home with our amazing Year 6 students. The cost of the trip is \$15 each and if a wetsuit is required, these can be hired from Waimarino for an extra \$5. Please return your permission slip along with payment to the office.

2019 CAMPS

YEAR 5/6 Camp Letters and permission slips went home with all year 4 & 5 students last week for the 2019 senior camp. The cost is \$150. You can pay this off at \$10 a week if you would like. Please make Automatic payments and direct credits to 031575 0042679-01 with child's name as reference.

YEAR 3/4 SURF n TURF Letter and permission slips went home with all year 2 & 3 students last week for the 2019 Surf n Turf camp. The cost is \$40 for Year 3 and \$50 for year 4. You can pay this off at \$10 a week if you would like. Please make Automatic payments and direct credits to 031575 0042679-01 with child's name as reference.

Please return you permission slips as soon as you can. If a parent would like to stay overnight we need a police Vett form filled in and returned to school before the end of the year.

MUSIC LESSONS 2019

Music lessons will be available at school again next year.

New Pupils Welcome!

Spaces Limited!

Contact Meryl Bennett Asap to secure your place.

021 2341721

merylmusic@outlook.com

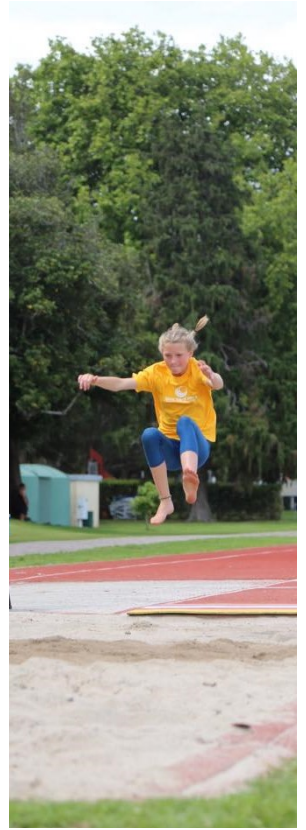


**Waihi East School would like to give a huge thanks
to everyone that has helped and supported the
Christmas Carnival Twilight Market for 2018.
Thank you, we appreciate and are humbled
by your amazing support:**

- * Waihi Mitre 10
- * *OceanaGold*
- * Sugar Magic Candy Floss
- * *Waihi Fire Brigade*
- * The Chook House
- * Waihi Family Doctors
- * Waihi Health Centre
- * Burrs Furniture Movers
- * Hickson Motors
- * EVE's Realty - Dynasty Holtz
- * Vital Harvest
- * *Eaten Café*
- * Kings Seeds
- * Beach Road Garden Centre
- * Karangahake Winery Estate
- * **EPH Fabrication**
- * Alton Drilling
- * *Accounting for Success*
- * Waihi Auto Spray
- * Waihi Hire
- * ***Vantier's Bouncy Castle***
- * Rural Tree Services
- * The Falls Retreat Bistro
- * Your Local NZ's Trusted Home Services
- * Deane Holland's Waihi Tattoo Studio
- * **Office Products Depot**

HORSERIDING ELECTIVE





ATHLETICS



KINA OMELETTE



Ingredients:

- 1 egg - beaten
- 100g of kina
- 50ml low-fat milk
- pepper - to taste
- herbs like parsley or chives - chopped (optional)
- 1 tbsp low-fat spread
- 1 or 2 slices of wholemeal toast to serve on
- lemon

Place beaten egg, kina, milk, herbs (if using) and pepper in a

bowl and stir to combine, trying not to break up the kina. Melt low-fat spread in a frying pan and pour in kina mixture. Cook until edges go frilly, then tilt the pan and draw the cooked egg into the centre, letting the uncooked egg run to the outside of the pan. Do this until the omelette is cooked. Fold omelette in half then slide onto toast. Sprinkle with a squeeze of lemon for some zing!

Developed by Sport Waikato 2018



The world of Story is alive at Rabbit Moon Cafe this January!

Join Amelia on her lively group adventures, exploring World Story, Folk Tale, Improvisation and Imagination!

With over 10 years experience Programing, Performing and Teaching Drama, Amelia is currently based in Melbourne where she owns and runs her small business, providing holistic movement, story, yoga and music programmes for early learning.

StoryTime Sessions
10am & 1pm
January 5th & 6th
28 Wilson Rd, Waihi Beach
\$5

Register your child in Cafe or via Rabbit Moon facebook event!

HOLIDAYS

Looking for something for your child/ren to do aged 8 - 12 years old next school holidays.

Kauaeranga Valley Christian Camp is running a School Holiday programme from Sunday the 6th to Thursday 10th of January 2019. The theme is Noah's Ark. Only \$160 per child for 5 days and 4 nights! We are Oscar approved. Download an application form today from our website: www.kvcc.org.nz

WHANGAMATA SUMMER BASH BASKETBALL CAMP

January 14-18 2019 at Whangamata area School Gym. Cost \$100 for the week. Each child will receive a basketball, t-shirt and the most fun you can have on a basketball court. Shoes MUST be worn, No bare feet allowed. Pee Wee, age 5—10 beginner skill level. 9-11am.

Hot Shot, ages 8-12 beginner skill level 9-11am.

Warriors, age 10-16 Intermediate skill level. 11am-1pm.

Blazers, age 14-18 intermediate to advance skill level. 1-4pm.

Registrations close 7th January 2019 Please contact Erik McClain 0279343287 or email whangabbal@gmail.com for more info.



EDVENTURE SUMMER CAMPS.

This summer we have 3 awesome camps geared to get kids excited about the outdoors. Free transport provided from Waikato. With a focus on water safety, we have planned a range of activities including surfing, SUP, water safety lessons, as well as tramping, rock climbing, confidence courses, bush survival skills, hot pools, orienteering, team building, camp cooking and heaps more.

- January 14th - 18th - Aongatete Lodge

- January 21st - 25th - Aongatete Lodge

- Jan 29th - Feb 1st - Reedwood Valley Farm

OSCAR available
8-14 yr olds

Pick up/drop off points in Auckland, Waikato, Tauranga, Whakatane and Rotorua.

For more information or to book now visit www.edventure.co.nz email

mark@edventure.co.nz or phone

02102241576

Book before Xmas and be in to win a surfboard.

COMMUNITY NOTICES

Before School Care wanted for 2 students in my home. 6.30am – 8.30am Monday – Friday and during school holidays. Please text your name to Bonnie 022 0290701 to discuss. Thanks.

New Zealand Government

Rates Rebate Scheme

Applications for 2018/19

The Rates Rebate Scheme provides a rebate of up to **\$630** for low income earners who were paying rates for the home in which they were living on 1 July 2018.

How do I apply?

Application forms are available from your local council or can be downloaded from the internet on www.govt.nz/rates-rebate

You need to apply to your local council.

What do I need to provide?

- Accurate information about your income (and that of any spouse/partner and/or joint home owner who lives with you) for the tax year ended 31 March 2018.
- Your regional council rates bill if received separately.

Where do I go for help?

You should contact your local council. Their details will be on your rates bill or you can go to www.localcouncils.govt.nz

APPLICATIONS CLOSE ON 30 JUNE 2019



Te Tari Taiwhenua
Internal Affairs

New Zealand Government

How is my rebate worked out?

Your rebate will be calculated based on your income, rates and the number of dependants living with you.

The income eligibility for a rebate is **\$25,180**.

However, if your income exceeds this amount you could still be entitled to a rebate depending on the total cost of your rates and the number of dependants.

Please refer to the application form or your local council for more information.

You cannot apply for a rebate if:

- the property is used principally for farming, commercial, industrial or business purposes; or
- the property is a rental property; or
- you have already applied for a rebate in the current rating year; or
- you do not qualify as a legal ratepayer.

For more information see www.govt.nz/rates-rebate

APPLICATIONS CLOSE ON 30 JUNE 2019



Te Tari Taiwhenua
Internal Affairs

INFCIS 0018

ACTING OUT SCHOOL OF DRAMA

Acting Out School of Drama is offering a one hour clowning workshop on December the 1st at Waihi College pavilion. Children are invited to attend the workshop in costume as a clown then will learn basic clowning and street theatre performance skills. The cost is \$12. Following the workshop children will be given the opportunity to use their new skills by participating in the Waihi Santa parade in a supervised walking float. Please email Paula at paulagaley@rocketmail.com or text 0223216171 by Sunday 25th of November to secure your child's place.

ANZ SCHOOLS

Developed in partnership with the New Zealand Olympic Committee, the **ANZ Olympic Schools Programme** is designed to inspire, motivate and reward our youth through the magic of the Olympics.

But that's not all—through the programme, ANZ parents connected to your school can also help your school earn ANZ Awards Centre credits, from successful home or business loans referred through our school network. Credits can be spent on new sports or computer equipment, plus much more.

Our school could also secure a visit from a Olympian following the first successful draw down of an ANZ home or business loan.

For more info visit anzolympicschools.co.nz

FREE PARENTING
HELPLINE
0800 568 856

all issues - all ages
9am - 9pm, 7 days a week
www.parenthelp.org.nz

THANKS TO OUR GREAT DUFFY BOOKS SUPPORTERS.
Your donations mean more books for kids.



Premier Construction

Rodney Ross

Owner/Operator

021 037 7489

premierconstruction.nz@gmail.co.nz

www.facebook.com/premierconstruction.nz



Burrs
FURNITURE MOVERS

*Small or large moves. Home or Business.
North Island wide. Packing Service.
Available seven days.*

MIKE BURR 0800 863 8510 • 027 269 3160
burrs@slingshot.co.nz • www.burrs.co.nz
20 Boundary Road, Waihi, 3610

WaihiFamilyDoctors

*"Providing friendly and quality
healthcare from our family to yours"*

Phone (07) 863 2112

**Opening Hours: Monday-Friday
8:30am - 5:00pm**



**Kiwikidz Educare
Waihi**



**Spaces available in
our pēpē room
now!**



863-6466 info@kiwikidzeducare.co.nz

**HOUSE NEED WASHING? ROOF NEED CLEANING?
GUTTERS NEED CLEARING? PESTS A PROBLEM?**



YourLocal

NZ's Trusted Home Services

**Dave Brewer
0800 002 816**

Waihi Health Centre



**Caring for our Community
since 1988**

2 School Lane, Waihi | Phone 07 863 8195
www.waihihealthcentre.co.nz



**CALL JAE FOR ALL YOUR
CLEANING SERVICES**

07 863 8358



gold fm

"Hear the difference"

Waihi 96.4 Waihi Beach 99.4
Paeroa 88.0 Coromandel 96.4
Thames 88.0 Matarangi 99.1
Cook's Beach 99.1 Whitianga 99.1

www.goldfm.co.nz  facebook

Principal: Zac Taylor
Ph:07 863 8693 Absentees: 021 0258 4817
Email Office for general enquires: office@east.school.nz
Email: principal@east.school.nz www.waihiest.school.nz
Waihi East Primary School, 8 Donnelly Street, WAIHI 3610

Copyright © 2016 WAIHI EAST SCHOOL. All rights reserved.