

Rise Above And Shine

WAIHI EAST SCHOOL

Te Kura Rauwhiti O Waihi

Newsletter

Donnelly Street

Waihi

Ph 07 863 8693

Fax 07 863 8671

Cell 021 0258 4817

Email principal@east.school.nz

www.waihiest.school.nz



Kapahaka Dress Rehearsal today.



Term 3 Caught Behaving
Intelligently
\$100 draw.
Winner; Lillie T.

UPCOMING EVENTS

- | | |
|--------|--|
| Oct 14 | Kapahaka-Hauraki Festival Paeroa |
| Oct 17 | Team East Whanau meeting.
Year 1-4 Basketball Starts. |
| Oct 19 | Touch Starts. |
| Oct 21 | College enrolment forms due back. |
| Oct 27 | Celebration Assembly. 2pm.
BOT Meeting. 5.30pm |
| Oct 31 | East School Agriculture Day. |
| Nov 4 | Group Day Agricultural day. |
| Nov 4 | Waihi East Athletics. |
| Nov 11 | Waihi Schools Athletics. |

Our Values

Honesty & Trustworthiness | Independence & Initiative | Tolerance & Caring | Courtesy & Manners | Responsibility & Fairplay | Respect for Self, Others & Property

Welcome back to term 4!

We are only 3 days in and the school is a buzz of action, excitement and learning!

We had a wonderful powhiri to officially welcome our new students that started towards the end of last term or beginning of this term. A huge warm welcome to our new families.

We have a group of Kapahaka students in full swing preparing and practicing for their performance on Friday. The whole school, First steps and Waihi Kindergarten got to see the group perform their first dress rehearsal. WOW! What a performance! The power, the energy, the pride and the beautiful waiata blew us all away. A huge thanks to Whaea Whetu for all your hard work and dedication in getting our tamariki ready. A huge thanks to Andrea for designing and organising our uniforms. Also thanks to Seton for taking on the role of guitarist. AND a shout out to all the parents and whanau that have helped with sewing, cooking, embroidering and supporting with this journey!

On the go already we have students researching and looking into possible recycled wearable arts ideas. In the coming weeks we will have a list of 'useful rubbish' that students will be trying to accumulate to help create their designs. The wearable arts will be displayed runway style towards the end of the term. Week 8, 2nd November.

HATS - Our school policy is that in Term 4 and Term 1, all students will be wearing the appropriate school hat outside. Please send your child's school hat (named) to school this week. If you cannot find or do not have a school hat contact Sharon to arrange another one. They are \$8 each.

Parking for after school pick ups - there are yellow lines marked either side of our school crossing point. These are there to ensure cars are not impeding visibility for students crossing and causing congestion. PLEASE DO NOT STOP OR WAIT where the yellow lines are painted.

We have a busy term ahead of us and there will be plenty of opportunities to come down and get involved in our learning journey so don't be shy!

Zac Taylor

NAU MAI, HAERE MAI—WELCOME

We would like to warmly welcome our newest students and their whānau. They are: Briar H, Dominic and Nevaeh V.

WHEELIE AFTERNOON/\$100 DRAW

Congratulations to Lillie T who was our winner of the \$100 'Caught Behaving Intelligently' draw at the end of last term.

CALENDAR FUNDRAISER

Our orders have gone away and should be returned by the middle of this term. They will be giving to the children to take home on arrival.

TEAM EAST WHANAU

Team East Whanau are holding a meeting next Monday 17th October to discuss fundraising for camps 2017 and kapahaka uniforms. ALL welcome. Cake and coffee provided. 2pm in the staffroom.

ATHLETICS

Classes have started preparing for our school athletics on November 4. We are looking forward to this competition. All welcome.

Kotuku team welcome Lou from Athletics NZ in for RUN, JUMP, THROW Support.

ELECTIVES

Can you help? Fridays, 9-11am from Week two. All offers welcome! We really need volunteers to give our tamariki a range of opportunities. Please see your class teacher to find out more.

RECYCLING MATERIALS NEEDED

Our Term 4 focus is 'Toi Pueru' which means wearable arts made from recycled materials.

So we are on the scrounge for any/all recyclables from your homes and businesses this term.

Our learning inquiries will be based around how we can 'reduce, reuse and recycle'.

We will be having a wearable arts show on 2nd November.

AGRICULTURE DAY

We will be holding our calf club day on 31st October and Group Day will be held on 4th November. Entry forms are available from the office. Please have your entry forms into the office by Friday October 14th.

YEAR 6 COLLEGE ENROLMENTS

Year 6 enrolment forms need to be returned to East School before October 21. Please see the office if you need another one.

WANTED

Ms Johansen needs ice cream containers and matching lids over the next month. Any spare ones you can bring to Room 8 will be most appreciated. Thanks.

SCHOLASTIC BOOK CLUB

Issue No. 7 will be coming home this week and closes on 4th November. All orders and payments to the office.

FOUND

A large silver ring. A gold hoop earring.

A Pearl stud.

A men's Hurley Hoodie (found on the road outside school)

TERM 4 AFTER SCHOOL SPORTS

TOUCH RUGBY

Touch Rugby starts this term, Week 2. Wednesdays 3.30 - 5.30 at Waihi Rugby Club. Year 1-6. If you are able to help with managing/coaching, we'd love to have you! Letters will come home to interested students this week.

BLUELIGHT BASKETBALL 2016

Bluelight basketball (FREE) will start 3.30pm Monday October 10th. (Week 1 Term 4) at the Waihi Events centre. Players will be mustered into teams so will need to be there on the first night. This will run for 6 to 8 weeks and is for middle and intermediate school students (Year 5-8). The draw will be in the Leader each week.

Registration forms are at the school office and closing date for registration is Sept 16th. No late entries. Please hand completed forms to the school office. For more info call Sterling Huett, Waihi Police 0211912435.

TERM 4 BASKETBALL

School Years 1&2 - Circle of growth programme - College Gym. Monday's starting 2nd week term 4. 3.20-4pm. 40mins. \$5 or \$20 if you want a Waihi Mini basketball t-shirt. Coached by Waihi College Students.
School Years 3&4 - Circle of growth Programme - College Gym. Monday's starting 2nd week term 4. 4.00-5.00pm. 1 hour. \$20. Includes t-shirt. Coached by Waihi College Students.

These students do not have to be in teams for this. School Years 5-6 - Friday Junior Summer League Basketball Years 5-11 - College Gym - we need more year 5/6 teams to make up a division!!! Social mixed teams. Graded into age. At least 2 girls per team. \$10 per player. This grade will be held straight after school - 3.30pm

This money will be made available to students seeking help with funding for their basketball in 2017.

If you have any questions or queries or would like to register a player or team. Please contact Rachael via Facebook, email. rachaelr@waihicol.school.nz or 0278700937.

STUDENTS WORK

There was a 7.1 magnitude earthquake at 4.37am in the 2nd of September 2016 on the East Coast of the North Island.

Stock fell off supermarket shelves and water tanks were badly cracked. Beds were rocking and Te Araroa School is shut. There were 140 aftershocks and the Tsunami warning has been lifted. Strap your emergency pack under your table for safety.

By Alex E-J. age 9, room 3.



COMMUNITY NOTICES

WAIHI BEACH SCHOOL FUN RUN

Over the Top Fun Run - Something for Everyone!
Saturday 12th November, 2016 @ 10am
This community fun run/walk is a school fundraiser with proceeds going towards finishing the school fitness trail.
There are 3 different run/walk options (3km, 6km & 10km) so there is "something for everyone" making use of our unique and gorgeous beach/bush surroundings.



Further information and registration forms can be found on the Waihi Beach School website or on Facebook under "Over the Top Fun Run" <https://www.facebook.com/events/1717623278503317/> or call Kris on 021 181 8897.

Registration forms can also be collected from the Waihi Beach School Office or Sport 'n' Action Office at the Waihi Events Centre.

WAIHI AMATEUR ATHLETICS CLUB

"Waihi Amateur Athletics Club 2016/2017 season"
Starting Monday 17 Oct 5-6pm with rego and info at College pavilion Rata St.
This will be followed by nibbles and meeting for committee and helpers at 6pm.
Contact Shar Kelly 021902797

BIG Beach Dig

4pm Sunday Oct 23rd.
Waihi Beach in front of the Surf Club.
Ages 1-12.
No spades, hands only.
Come dig for treats.
Run by Beach Christian Centre.
<http://www.beachchristiancentre.org.nz/>

FREE EAR CLINIC SERVICE FOR CHILDREN

Visit the Ear Nurse for advice on; Glue ear assessment and management, wax/foreign body removal, grommet check and treatment of discharging ears. All children must be accompanied by a parent or caregiver.
The Ear caravan will be at Waihi Central School, Moresby Avenue tomorrow, Thursday 13th October 9.30am-1.30pm. (closed for lunch 12 noon - 12.45pm).

This year's **Round the Bridges** is on Sunday 13 November. Enter a school team now and be in the draw to win one of two \$500 Rebel Sport vouchers!

\$6 Super Saver entry for the 2km Kids Challenge is available until 31 August. The event also features 6km and 12km categories for adults.

Visit www.roundthebridges.co.nz for more info.



ROUND THE BRIDGES
SUNDAY 13 NOVEMBER 2016

2KM KIDS CHALLENGE
Enter online at roundthebridges.co.nz



designshednz

0274 316 461



designshed
VISUAL COMMUNICATION

the message is in the delivery

Burrs
FURNITURE MOVERS

*Small or large moves. Home or Business.
North Island wide. Packing Service.
Available seven days.*

MIKE BURR 0800 863 8510 • 027 269 3160
burrs@slingshot.co.nz • www.burrs.co.nz
20 Boundary Road, Waihi, 3610

WaihiFamilyDoctors

*"Providing friendly and quality
healthcare from our family to yours"*

Phone (07) 863 2112

**Opening Hours: Monday-Friday
8:30am - 5:00pm**



gold fm
"Hear the difference"
Waihi 96.4 Waihi Beach 88.3
Paeroa 88.0 Coromandel 96.4

Ph: (07) 863 9644

www.goldfm.co.nz facebook



use coupon code
WAIHI EAST
for free
delivery

**Order Tuesday for delivery to
Waihi East School on Wednesday**

www.growlink.co.nz All enquiries: growlink@kinect.co.nz
Experience it today and discover the difference

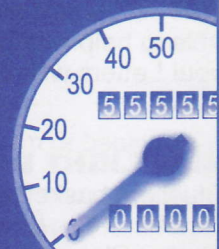
Waihi Motors 2013

For all your mechanical needs

Joe and Joni Kuizinas

07 863 6363
021 1652988

School Lane,
Waihi
waihimotors@yahoo.co.nz




MATT WALKER BUILDERS

021 438 758

Rawleigh's
TRADE MARK

HEALTHCARE

Ciann Brown
Independent Distributor

07 863 8772
022 011 5535
Waihi 3610



FREE GIFT WITH PURCHASE

Beach Blooms
Florist Waihi Beach

29 Wilson Rd., Waihi Beach
www.beachblooms.co.nz
07 863 5223



joy sushi

www.facebook.com/joysushiatwaihi

SHOP3, 15 ROSEMONT RD
WAIHI 3610
07 863 3383
9:00am - 4:00pm / mon - sat



**DINE IN OR TAKE AWAY
PARTY PACKS AVAILABLE**

(WAIHI EAST FAMILY SPECIAL - 20% DISCOUNT FOR BIRTHDAY PARTY PACKS)