

*Rise Above And Shine*

# WAIHI EAST SCHOOL

*Te Kura Rauwhiti O Waihi*

*Newsletter*

Donnelly Street  
Waihi

Ph 07 863 8693

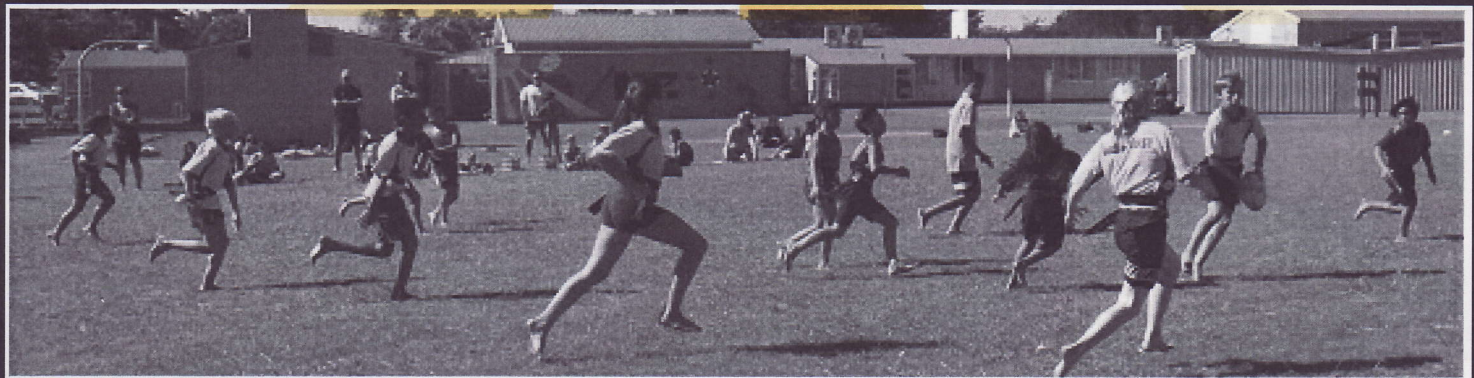
Fax 07 863 8671

Cell 021 0258 4817

Email [ehargreaves@east.school.nz](mailto:ehargreaves@east.school.nz)

[www.waihi-east.school.nz](http://www.waihi-east.school.nz)

Principal: Emily Hargreaves



Rippa  
Rugby



## IMPORTANT DATES

April 12 Class Photos.

April 13 Giant Pumpkin weigh in.

WBOP Swim Sports.

April 14 Miss H's Farewell Assembly. 12 noon.

April 15 Last day of Term 1.

Cool Kids afternoon.

May 2 Term 2 starts.

May 6 ICONZ starts.

June 6 Queens Birthday, School closed.

## *Our Values*

*Honesty & Trustworthiness | Independence & Initiative | Tolerance & Caring | Courtesy & Manners | Responsibility & Fairplay | Respect for Self, Others & Property*

Kia ora

The end of the term is near and we are squeezing all whanau for participation in events and celebrations. Thank you for your support, however we realize it is a super-doooper busy time.

We aim to head to ANZAC Bay this Friday for our annual Splash and Dash. We are still finalizing cars and ensuring we have the required ratio of adults to children available on the day- safety first, then fun! Please let us know if your situation has changed i.e. you can now help out on the day. Waka colours please!

Our Pumpkin Arvo is next week. Please note the change in times- 4-6pm. Our kai also reflects the afternoon tea type food. Please come along and support us. We are raising money for our Reading Eggs and Athletics programmes. Our aim is to present the winners and undertake the lucky draw at 5.30pm. You must be there to win. A massive thank you to the fundraising team- particularly Sue and Nicki who have obtained awesome prizes. AMAZING!

The new Streets Ahead playground is now underway. Come down and check out this area. We are very fortunate to have a community owned playground on site, and I publicly want to thank Bindy and Tara, along with the Streets Ahead team for this stunning resource for all East Enders. An opening will be held in early May. Watch all newsletters and our website for more information.

This week Lisa Neame resigned from her teacher aide position. Lisa has been a stunning supporter as a staff member and parent. We wish Lisa well with her next steps, knowing your bubbly, positive and caring self will remain part of the East School team.

Rumour has it that there will be a lovely celebration on Thursday the 14th to celebrate my time at Waihi East School. As you know, public speaking is not my thing and it is a very emotional time, saying good bye to an amazing community, staff and beautiful students. So, if my snot and not my words flow, thank you all for your contribution. Waihi East School reflects the people within it- stunning individuals who work together as a team. Massive thanks to our Board of Trustees for your leadership, our staff for reaching for the stars to support our children and to our whanau for helping, motivating and your constant support. Your children deserve the best, and they have it at this school. All the best with your future. Thank you for the opportunity of being part of your journey.

Nga mihi nui  
Emily

#### **SCHOOL BANKING**

Our school bankers are trained and ready to take your banking on Thursday mornings at 8.30am. Tomorrow's bankers are Meg and Madison.

#### **THANK YOU**

Our Thanks to Karyn and her team for holding a fundraising stall at the Beach Hop warm up party last Wednesday. They raised \$550 towards next years camp. What an amazing effort!

#### **THANK YOU**

A big Thank You to the Williams/Paulsen family for their kind donation of toys. Room 6 are loving them! Once again, Thank You.

#### **HELP!**

We need a little help with giving our Mosaic at the front of the school a spruce up. Any ideas or if you could help that would be great!! Please let the office know . Thanks.

#### **GROWLINK**

Growlink orders have been dropping off so free delivery may have to be stopped to our school. Growlink offers your choice of fruit, veges and groceries online delivered for free to Waihi East School. Order Tuesday for a Wednesday delivery. go to [www.growlink.co.nz](http://www.growlink.co.nz) and use coupon code WAIHIEAST for free delivery.

#### **RIPPA SHIRTS**

Please return all rippa shirts to the school office now as they will be needed for the soccer teams next term.

#### **PUMPKIN WEIGH IN**

Just a reminder that we have our Giant pumpkin weigh in on Wednesday 13th April. Any donations for our hampers can be left at the office. All donations receive an entry into the big Spot Prize on the day. This is an afternoon event, 4pm start.

Three competitions are running

- ◆ heaviest pumpkin.
- ◆ best pumpkin face (go wild with the decorations)
- ◆ best veggie creation.

Great prizes!

#### **MISS H'S FAREWELL**

We will be holding a Farewell assembly for our lovely principal on Thursday 14th April at 12 noon at School. Followed by shared kai and cuppa. All welcome, including secondary school children.

#### **NETBALL**

The 2016 season starts on May 7th April. Subs for year 5 & 6 are \$45.60 each. Year 4 is \$30 each and year 1, 2 & 3 is \$5 each. Please pay at the office as soon as possible. Netball dresses will be issued once subs are paid.

#### **CHOCOLATE EASTER EGG FUNDRAISER**

Please return any unsold Easter Eggs and any money from sold eggs to the school office as soon as possible. Thank You for supporting this fundraiser. All funds raised go to next years year 5 and 6 camp.

#### **LUNCHTIME SALES**

We have juicies and popcorn for sale from the office \$1 each. Juicies are only sold at lunchtime after eating.

## Kids' Work

On Friday the 1st of April we had a visitor his name was Nathan Gray. He is an adventurer from New Zealand he walked the whole of the Great Wall of China. The Great Wall of China is so big you can see it from outer space, it was a 4000 kilometre walk, he was with an Argentinian and two other New Zealanders. If I can my Dad will probably buy me one of his books, I want to buy one of those books cause I want to learn more about travelling.

By Paul Walker (PJ) age 9 yrs, rm 1.



Dear Council

We think that you should pay Search and Rescue. It is ridiculous that you don't pay them.

I think Search and Rescue should get paid because they risk their lives for on o you. They climb cliffs and everything else that could go wrong.

They look everywhere for you. They will search day or night to find you. What if the person you loved went missing? How much would you pay them?

So I say again these reasons are strong enough to get your butt of the couch and pay Search and Rescue!

By Jake P, age 8, room 3.

## HOLIDAY EVENTS

### WAIHI BLUE LIGHT EVENTS

April School holidays first week; 1pm to 4pm.

Tuesday 19th April, inline skating and scooters.

Thursday 21st April, Sports games.

Second week; 1pm to 4pm.

Tuesday 26th April, inline skating and scooters.

Thursday 28th April, Sports games.

Bluelight Waihi are holding activities for the kids 2 days per week. Parents are welcome to come along and watch the kids and join if you want. Fun games on both Thursdays.

Ages: from 5 years to 15 years old for both days.

## LOST & FOUND

**Found** (see the office if yours)

Bright coloured Tickle watch.

Black framed reading glasses. Orson +1.50

Gold framed reading glasses.

Red plastic framed sunglasses.

A gold plated toe ring.

A silver charm bracelet.

A silver locket with a photo in it.

## COMMUNITY NOTICES

### SATURDAY NIGHT SKATING

Saturday night Skating is on again.

Doors open 6pm-8pm. \$5 entry includes skate/scooter hire or bring your own.

Food and drinks for sale.



### UNQUALIFIED RELIEVER REQUIRED

A local Childcare Centre is seeking an unqualified reliever to support them at times during the day when they need extra cover and at other times when staff are away. They are looking for someone who had some experience (like a mother) and enjoys working with preschool children and can be confidential about their children and families.

If you are interested in enquiring further, please ph. Sue on 07 863 7955 or 021 02213533 and they will discuss and see if you are the right person for them.

### TURF HOCKEY

Hockey Clubs are looking for new players. Come and join our friendly senior(adult) competition, starts early April. All games are played in Ngatea in the evenings.

Ngatea Hockey Club 027 4971019

Thames Hockey Club 021 443 248

Primary competitions starts week 2 term 2. all ages, all grades.

[www.valleyhockey.org.nz](http://www.valleyhockey.org.nz)



### ANZ OLYMPIC SCHOOLS

Waihi East School is a part of the ANZ Olympic School programme. ANZ has developed the ANZ Olympic Schools Programme with the New Zealand Olympic Committee to provide schools with resources to inspire and motivate New Zealand children through the magic and celebration of achievement the Olympics delivers. Through the programme, when you refer fellow parents and friends in your school network to ANZ for their home or business lending, your chosen school will have the opportunity to secure an Olympian visit at their school. Plus, for every successful home or business loan referral of \$50k or more, the school also earns credits to spend at the ANZ awards centre on new IT equipment or sports gear.

## EGG-CELLENT EGGS

## EGG CUSTARD!

Custard is a good choice if you're having dessert.

- 1 cup milk
- 1 egg
- 1 tsp honey
- 1/4 tsp vanilla essence

Whisk all ingredients together. Stir over a very low heat until the custard coats the back of a spoon. Serve hot or cold with fruit.



Developed by Sport Waikato 2015

# WHISK

Cafe - Caterer - Deli - Cakes  
07-863-7278

• \$10 off your kids birthday cake

• Free coffee with your meal  
(Blackboard menu)

Exclusive offer to East School parents

34 Rosemont Road, Waihi.

## Burrs FURNITURE MOVERS

Small or large moves. Home or Business.  
North Island wide. Packing Service.  
Available seven days.

MIKE BURR 0800 863 3510 • 027 269 3160  
burrs@slingshot.co.nz • www.burrs.co.nz  
20 Boundary Road, Waihi, 3610

## WaihiFamilyDoctors

"Providing friendly and quality  
healthcare from our family to yours"

Phone (07) 863 2112

Opening Hours: Monday-Friday  
8:30am - 5:00pm



"Hear the difference"

Waihi 96.4 Waihi Beach 88.3  
Paeroa 88.0 Coromandel 96.4

Ph: (07) 863 9644

www.goldfm.co.nz facebook



use coupon code  
WAIHI EAST  
for free  
delivery

Order Tuesday for delivery to  
Waihi East School on Wednesday

www.growlink.co.nz All enquiries: growlink@kinect.co.nz  
Experience it today and discover the difference

## Waihi Motors 2013

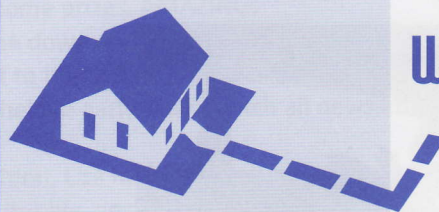
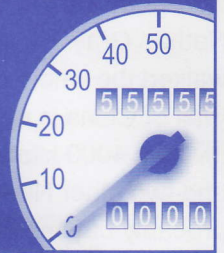
For all your mechanical needs

Joe and Joni Kuizinas

07 863 6363  
021 1652988

School Lane,  
Waihi  
waihimotors@yahoo.co.nz

10% OFF  
your next  
service  
with this  
voucher



## MATT WALKER BUILDERS

021 438 758

## Rawleigh's

### HEALTHCARE

Ciann Brown

Independent Distributor

07 863 8772  
022 011 5535  
Waihi 3610



FREE GIFT WITH PURCHASE

## Beach Blooms

Florist Waihi Beach

29 Wilson Rd., Waihi Beach

www.beachblooms.co.nz

07 863 5223



## joy sushi

www.facebook.com/joysushiatwaihi

SHOP3, 15 ROSEMONT RD  
WAIHI 3610  
07 863 3383  
9:00am - 4:00pm / mon - sat



DINE IN OR TAKE AWAY  
PARTY PACKS AVAILABLE

(WAIHI EAST FAMILY SPECIAL - 10% DISCOUNT FOR BIRTHDAY PARTY PACKS)