

Rise Above And Shine

WAIHI EAST SCHOOL

Te Kura Rauwhiti O Waihi

Newsletter

Donnelly Street
Waihi

Ph 07 863 8693

Fax 07 863 8671

Cell 021 0258 4817

Email ehargreaves@east.school.nz

www.waihi-east.school.nz

Principal: Emily Hargreaves

Welcome Back!



2015 Prizegiving.

IMPORTANT DATES

Upcoming Events...

- Feb 3 Senior Camp meeting 5.15pm
- Feb 8 Waitangi Day observed. NO School.
- Feb 9-12 Senior Camp.
- Feb 17 Ripa Rugby 3.30 pm.
- Feb 19 Year 6 Leadership day.
- Feb 22 BOT Meeting.
- Feb 24-25 Year 3/4 Surf & Turf.
- Feb 24 Ripa Rugby.
- Feb 25 Year 1/2 Mine visit.
- Feb 29 Senior Swim sports @College Pool.
Week of Junior School Swim display.
- March 2 Ripa Rugby.
- March 4-6 Vanners Safari using back field.

- March 9 Waihi Cluster Swim Sports.
- March 9 Ripa rugby.
- March 22 North Cluster Swim Sports.
- March 23 Ripa Rugby.
- March 24 Splash & Dash @ Anzac Bay.
- March 25 Easter Friday. NO School.
- March 28 Easter Monday. NO School.
- March 29 NO School.
- March 30 Ripa Rugby.
- April 5 Duffy Book Show.
- April 7 Room 2 First Aid Course.
- April 8 Room 1 First Aid Course.
- April 12 Class Photos.
- April 13 Giant Pumpkin weigh in.
WBOP Swim Sports.
- April 15 Last day of Rem 1. Cool Kids afternoon.

Our Values

Honesty & Trustworthiness | Independence & Initiative | Tolerance & Caring | Courtesy & Manners | Responsibility & Fairplay | Respect for Self, Others & Property

WAIHI EAST SCHOOL

SCHOOL NEWSLETTER 01/2016

3rd February 2016

Kia ora

Welcome to the 2016 school year, particularly to all new whanau. Thank you for choosing our kura. We hope you find your time with us rewarding. We are all very excited to be back in school and look forward to working with you to ensure educational success for your whanau. As always, we appreciate hearing your ideas, praise and your concerns. To help this process we have included all teaching staff's email addresses. All staff look forward to working alongside you. The Board of Trustees hopes your child enjoyed their welcome back pack of stationery, that has been delivered to you. This is a little gesture of thanks to whanau and a sprinkling of kindness from the Board. Enjoy!

Our school looks amazing. Thank you Ross Cowan (our caretaker) for your holiday efforts. A member of the community noted that the school has never looked better! Thank you Ross for keeping the pool open for our whanau, including returning to school during your holiday to keep the pool in tip top condition. Thank you also to the Douglas whanau, Coxon whanau, Moore whanau, Bloxham whanau, Turton whanau, Hill whanau & Sprengers whanau for supporting the Board by managing the pool when Ross is off site. This was amazing! A small reminder to all key holders, please do not share your pool key with community members and remember to lock the gate when you leave.

School camp for year 5 & 6 is next week! (15-19th of February). Robbie and Rachael have an awesome adventure planned. Surf and Turf for year 3 & 4 children will be on Wednesday 23rd and Thursday 24th of February. Briar is leading this outing, and it is sure to be stunning. Year 1 and 2 children will not miss out, a school picnic is planned for them on the 25th of February. Our annual Dash and Splash is later in the term. Please check out all dates on the School website. A wee note of thanks to Meg for fundraising \$65.40 towards camp. You are such a caring super star!

Is your garden overflowing with produce and you can't find a place to share them? At school we will have a sharing table at the gate. Please feel free to donate any produce or to take produce home. Our aim is to have an empty table by the end of each school day.

Nga mihi nui

Emily (ehargreaves@east.school.nz)

CLASS ORGANISATION 2015

Principal Miss Emily Hargreaves
Junior School Deputy Principal Mrs Briar Frew
Senior School Deputy Principal Mrs Rachael Coll

New Entrants	Mrs Sarah Cannell/Kirsty Smith	Room 6
Year 1/2	Ms Maren Johansen	Room 8
Year 2/3	Mrs Briar Frew	Room 5
Year 1/2	Ms Jude Fletcher	Room 7
Year 3	Mrs Nicole Laing	Room 4
Year 4	Mrs Beryl Hughes	Room 3
Year 4/5/6	Mr Robbie McGougan	Room 1
Year 4/5/6	Mrs Rachael Coll	Room 2

Other staff:

Office Admin	Mrs Sharon Samson
Teacher Aides	Mrs Alex Heremaia, Mrs Leann Bellamy, Mrs Lisa Neame, Mr Thomas Tasma
Caretaker	Mr Ross Cowan
Cleaner	Ms Feydra Harker-James

NEW FAMILIES

We would like to welcome Bayley K, Jackson K, Logan W, Arik W, Callum M, Serenity S, Dannika W, Alex H, Mateo C, Zoe F-P, Blake S, Rylee K, Travis N, Alexis W, Erana K, Ata K, Shanya D, Jahna D and Patrick P to our school. We know they will enjoy their time at Waihi East School.

PARENT HELPERS

Staff and students appreciate having whanau/parent helpers in our school. If you have a little bit of time available you may like to be a member of these teams. Please let Sharon or a member of the leadership team know if you can help. We are keen as mustard to have your support at school.

Breakfast Club– supporting a breakfast each morning.

Sushi- pick up every Thursday from town.

Resources– helping put away resources within the school.

In class support– children reading to you.

START/FINISH TIMES

The starting time for each school day is 9am. Our school is open from 8am. School finishes at 3pm. The school bus leaves at 2.50pm. If your child is a bus student they will be placed on the bus unless the office has been notified otherwise.

IMPROVED PARKING

We are very happy to note the positive impact the new parking system is having before and after school. Lines will be painted very soon. Please continue to use the bus bay as a pick up/drop off zone. This helps with end of day congestion.

SCHOOL CONTACTS

Phone: 863 8693

Cell phone: **021 0258 4817**

Fax: 863 8671

email: office@east.school.nz

Visit our school's new website www.waihi-east.school.nz

SUN HATS

Children can choose to wear the KidsCan hat or our school hats which can be purchased from the school office. These hats are \$9.00 each. The hats are kept at school but sent home at the end of the term for cleaning. No hat means the child does not go out in the sun at morning tea or lunch time. **No other hats are allowed at school.**

PAYMENTS

We realise that money can be a wee bit tight at this time of year. To make the start of year slightly easier, the administration team can help you set up an automatic payment. Our bank account number for all payments is 031575 0042679-01. Eft-pos is also available.

INFORMATION ON YOUR CHILDREN

The school keeps certain information on your children and it is most important that we are updated if any of the following details change: Phone no's, address, email, doctor, medical problems, change of caregivers, emergency contact (which we use if we cannot get anyone at home). Please call into the office or send a note with any changes.

We have enclosed the information we have on your contact details. Please return the slip if it requires updating.

SCHOOL DONATION

The school donation remains unchanged this year. The funds will be used to provide classroom consumables and resources, as well as subsidising photocopying costs etc. Thank you for your continued support. We also have forms at school for Automatic Payments if you prefer.

The Donations are:

- * 1 child family - \$50 [\$15 each term]
- * 2 child family - \$90 per family [\$30 per term]
- * 3 child family - \$120 per family [\$40 per term]
- * 4 children plus is \$150 per family or \$40 per term The per year figure is discounted if paid in one lump sum.

HEALTH MATTERS AND ALLERGIES

Parents are asked to write a note or speak with the child's teacher if there are health matters or allergies such as bee stings that may seriously affect your child. Wherever necessary medication, named and with full instructions affixed, will be kept in the locked medical cupboard at school. The school needs a medication consent form for any child that staff may have to administer medication to. If your child is one of these, see your child's class teacher or Sharon in the office. Parents of children who have grommets in their ears or who have ear infection problems are asked to discuss problems associated with swimming with the teacher. In such cases tight fitting bathing caps can be a partial solution. [Any wounds should be covered for swimming].

MUSIC LESSONS 2016

Mrs Wella Tasma's will be holding Music Lessons on Wednesday mornings during school time. She teaches guitar, ukulele, singing, keyboard, recorder or flute. If you would like your child to take lessons please contact Wella on 8636322 or artzsong134@gmail.com

SCHOOL DOCTOR

Doctor Tineke Iverson will be running her school clinic again this year. Tineke will be available one morning a week. Dates and times to be confirmed and will be in the newsletter once confirmed. Please make all appointments at the office.

UNIFORMS

At Waihi East our expectation is school uniform to be worn. Clothing may be supplied if your child is often out of uniform. Remember our bottoms are to be black, navy or denim.

SCHOOL POOL

We wish to advise you that the school swimming pool will be open to Waihi East School whanau this term. The pool is available between 3 and 7.30pm weekdays and 10am—7.30pm weekends. Please follow the Board of Trustees pool rules. They have been set to ensure a safe and fun area for our school community.

SWIMMING

Instruction will commence immediately and we expect every child to take part in the daily lessons unless they are medically unfit. In such cases parents are asked to send an explanatory note.

Swimming is fun, a life skill and a great way to cool down in this hot weather.

SCHOOL NEWSLETTERS

Wednesday is school newsletter day and a newsletter is issued **every Wednesday** - ask your child for it each Wednesday or check it out on our school website. Usually school newsletters are given to the eldest child in a family or the only child going to East School. These newsletters are the main means of communicating with parents and I would ask that parents read them carefully. Quite often a reply slip is attached and it is most helpful if we get an early response to such requests. Many thanks! We appreciate the support of those who pay for adverts on the newsletter. Please support them with your patronage. **If you would prefer your newsletter emailed to you please email Sharon in the office.**

PUPIL ABSENCE FROM SCHOOL

So there are no doubts as to a child's whereabouts, parents are asked to inform the school whenever their child is going to be absent. If the child is away for several days it is only necessary to let the school know on the first day of absence. It is still appropriate to send a note of explanation or make contact with the teacher after a lengthy absence. On the first day of absence the school can be notified in either of the following ways:

- 1) by telephoning - 863 8693
- 2) by sending a note to the child's teacher via another child.
- 3) sending a text to **021 0258 4817**

Sharon or another staff member will take the message and note it on a form that is circulated to all classes by 9.30am each day.

Note: It is a legal requirement for schools to be advised of children's absences.

STAFF EMAIL ADDRESSES

Room 1; rmcgougan@east.school.nz
Room 2; rcoll@east.school.nz
Room 3; bhughes@east.school.nz
Room 4; nlaing@east.school.nz
Room 5; bfrew@east.school.nz
Room 6; scannell@east.school.nz
Room 7; jfletcher@east.school.nz
Room 8; mjohansen@east.school.nz
Principal; principal@east.school.nz
Office; office@east.school.nz

WHISK

Cafe - Caterer - Deli - Cakes
07-863-7278

• \$10 off your kids birthday cake

• Free coffee with your meal
(Blackboard menu)

Exclusive offer to East School parents

34 Rosemont Road, Waihi.

Burrs FURNITURE MOVERS

Small or large moves. Home or Business.
North Island wide. Packing Service.
Available seven days.

MIKE BURR 0800 863 3510 • 027 269 3160
burrs@slingshot.co.nz • www.burrs.co.nz
20 Boundary Road, Waihi, 3610

WaihiFamilyDoctors

"Providing friendly and quality
healthcare from our family to yours"

Phone (07) 863 2112

Opening Hours: Monday-Friday
8:30am - 5:00pm



"Hear the difference"

Waihi 96.4 Waihi Beach 88.3
Paeroa 88.0 Coromandel 96.4

Ph: (07) 863 9644

www.goldfm.co.nz facebook



use coupon code
WAIHI EAST
for free
delivery

Order Tuesday for delivery to
Waihi East School on Wednesday

www.growlink.co.nz All enquiries: growlink@kinect.co.nz
Experience it today and discover the difference

Waihi Motors 2013

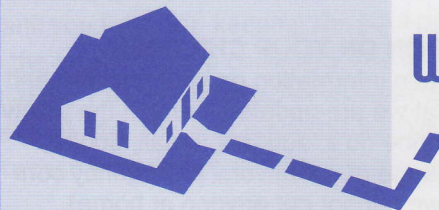
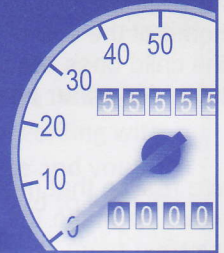
For all your mechanical needs

Joe and Joni Kuizinas

07 863 6363
021 1652988

School Lane,
Waihi
waihimotors@yahoo.co.nz

10% OFF
your next
service
with this
voucher



MATT WALKER BUILDERS

021 438 758

Rawleigh's

HEALTHCARE

Ciann Brown

Independent Distributor

07 863 8772
022 011 5535
Waihi 3610



FREE GIFT WITH PURCHASE

Beach Blooms

Florist Waihi Beach

29 Wilson Rd., Waihi Beach

www.beachblooms.co.nz

07 863 5223



joy sushi

www.facebook.com/joysushiatwaihi

SHOP3, 15 ROSEMONT RD
WAIHI 3610
07 863 3383
9:00am - 4:00pm / mon - sat



DINE IN OR TAKE AWAY
PARTY PACKS AVAILABLE

(WAIHI EAST FAMILY SPECIAL - 10% DISCOUNT FOR BIRTHDAY PARTY PACKS)